

Czech Sport Aircraft a.s.	<b>SERVICE BULLETIN</b>	Czech Sport Aircraft a.s. Na Záhonech 1177/212, 686 04 Kunovice Czech Republic office@czechsportaircraft.com
No. SB-SC-014		Rev.: -
Date: 2012-06-12		
Page: 1 of 3		Date: -

<b>MODEL AFFECTED:</b>	SportCruiser / PiperSport
<b>SUBJECT:</b>	Rudder fixed trim tab additional installation
<b>AIRCRAFT AFFECTED:</b>	All SportCruiser aircraft produced. All PiperSport aircraft produced. Aircraft serial numbers S/N P1102001 and subsequent will have the subject of this bulletin accomplished prior to delivery.
<b>COMPLIANCE:</b>	According to aircraft owner decision - depending on service conditions.

**DESCRIPTION:**

The Service Bulletin concerns an additional installation of the rudder fixed trim tab. The rudder trim tab may be added to relieve pedal pressure in cruise flight

**APPROVAL:**

Engineering design aspects of this SB are Czech Sport Aircraft a.s. approved.

**AUTHORISATION TO PERFORM:**

US: Repairman (LS-M) or Mechanic (A&P). Europe & Elsewhere: EASA Part M Engineering organization or for Amateur / Experimental Aircraft (eg LAA) Constructor or Inspector.

**MANPOWER:**

Approximately 4 hours are required to complete this Service Bulletin. Man-hours are based on hands-on time, and may vary with personnel and facilities available.

**SPECIAL TOOLS:**

Drill bit diameter 3.2 mm (1/8 in)  
Electric drill  
Riveting tool

**WEIGHT AND BALANCE:**

Not affected.

**ELECTRICAL LOAD DATA:**

Not affected.

**REFERENCES:**

SportCruiser Maintenance and Inspection Procedures (SC-MIP-0-00)  
PiperSport Maintenance Manual (PS-MM-1-0-00)

**PUBLICATIONS AFFECTED:**

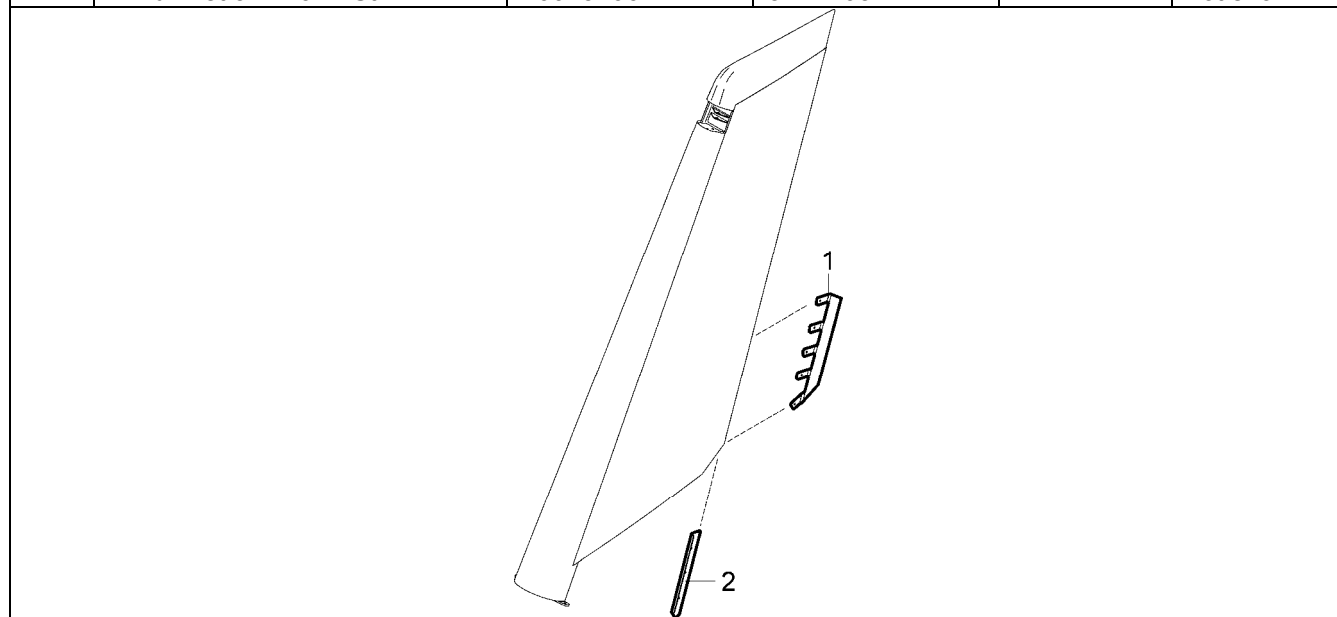
SportCruiser Maintenance and Inspection Procedures (SC-MIP-0-00)  
PiperSport Maintenance Manual (PS-MM-1-0-00)

Czech Sport Aircraft a.s.	<h1>SERVICE BULLETIN</h1>	Czech Sport Aircraft a.s. Na Záhonech 1177/212, 686 04 Kunovice Czech Republic office@czechsportaircraft.com
No. SB-SC-014		Rev.: -
Date: 2012-06-12		
Page: 2 of 3		Date: -

**CONSUMABLE MATERIAL:**

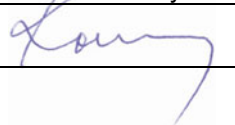

Will be supplied by the aircraft manufacturer.

Item	Name	Part Number	Nomenclature	Quantity	Note
1	Trim tab	ST0051N		1	
2	Reinforcement	ST0052N		1	
3	Blind rivet AVEX 3.2 x 9.5 Al/St ZH	16040412	3171T018	45	not shown
4	Blind rivet 3.2 x 6 Al/St PH	10013206	3171T037	1	not shown



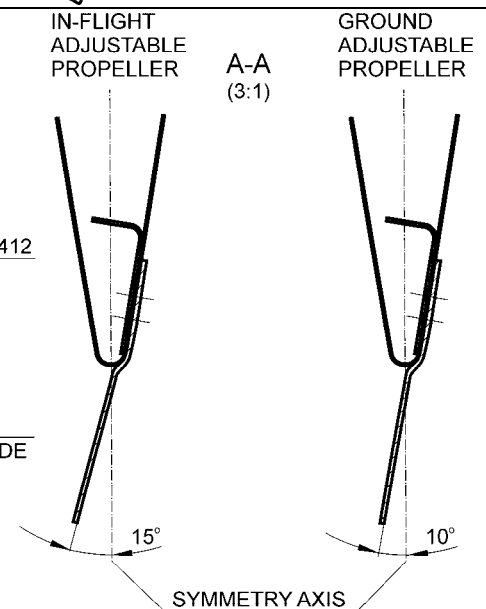
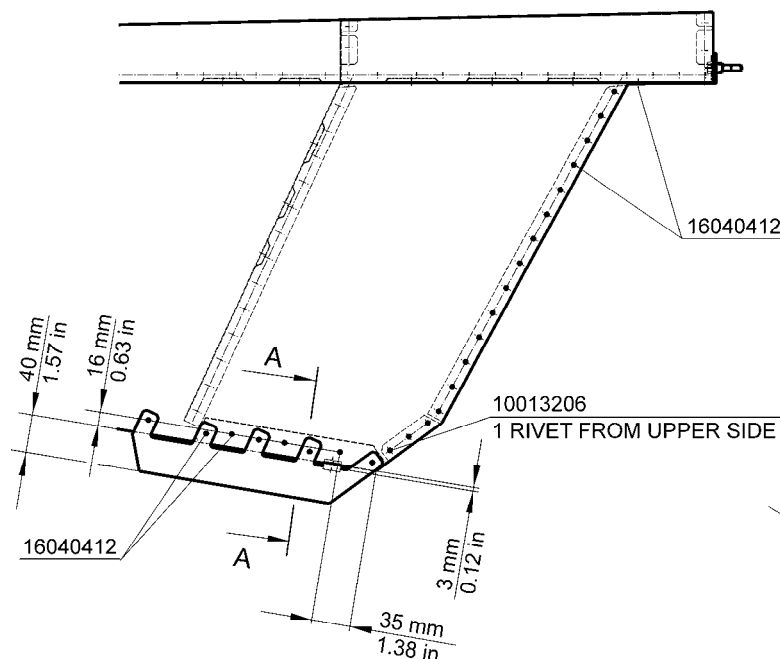
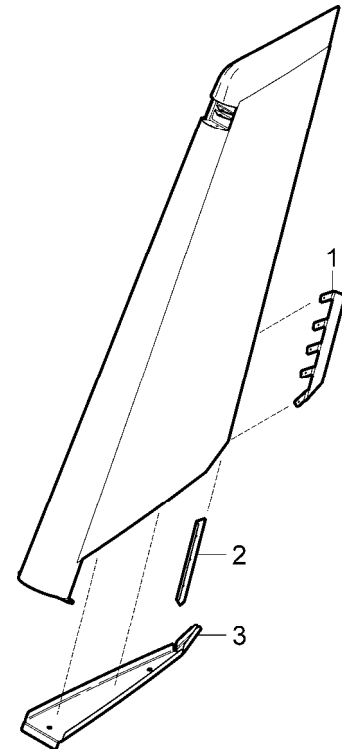
**APPROVAL:**

This SB was approved by:

<b>Title</b>	Head of the Design Organisation	Airworthiness Manager
<b>Name</b>	Jiří Konečný	Josef Vlachynský
<b>Hand written signature</b>		

## ACCOMPLISHMENT INSTRUCTIONS:

1. Move the aircraft to a place suitable to perform the work.
2. Remove engine cowlings, disconnect positive battery terminal.
3. Remove rudder according instructions in the MIP or MM.
4. Carefully drill out the bottom rib (3).
5. Position the trim tab (1) as per figure, mark and drill off rivet holes using drill size 3.2 mm.
6. Position the reinforcement (2) on the holes for trim tab, mark and drill off rivet holes using drill size 3.2 mm.
7. Insert the reinforcement (2) to the rudder, position the trim tab (1) so that the rivet holes are aligned and parts mutually rivet.
8. Insert the bottom rib (3) to the rudder, position and rivet it. Use rivet type according figure.
9. Touch up coat on the rivets.



10. Set the tab to the initial angle according to type of installed propeller.
11. Install rudder according instructions in the MIP or MM.
11. Install engine cowlings.
12. Restore the aircraft to the airworthy condition.
13. Perform test flight; on the basis of test flight adjust final setting of the tab.
14. Update aircraft records to reflect compliance with this SB.